

Silios DC safety switches

for Solar Systems

Santon has developed a range of DC safety switches for the protection of Photo voltaic solar systems. This standard range is called the Silios range.

This switch was developed in close cooperation with major manufactures of solar systems and the relevant German Certification institutes. The Silios switches comply with all the requirements for use in a system as stated below. The switches

shown below are a selection from an extensive range.

Specifications:

Insulation class	: IP65
Degree of protection	: two
According to standard	: IEC 60947-1/3
Certified by	: KEMA and TÜV



Type: 50A0272-PS13

Standard switch for 16A, DC21A, 500V, two poles with screw connections. The switch is mounted in an IP65 plastic housing.



Type: 50A0264-PS1302

Standard switch for 20A, DC21A, 1000V, two poles. The switch is mounted in an IP65 plastic housing. With 2x2 MC connections.



Type: T10022/B

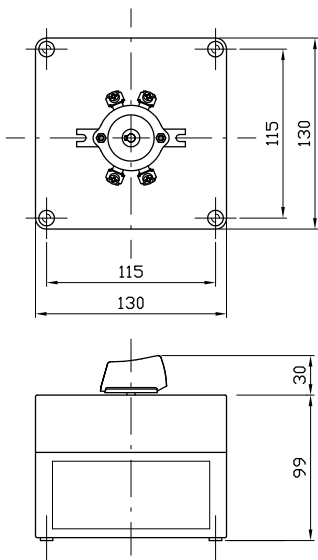
Standard switch for 25A, DC21A, 1000V, two poles screw connections, wired safely onto 6 mm² terminals which can be used for a maximum of 3 strings as incoming and a plus and minus connection going out to the inverter. Bottom has 2x10 knock-outs. Unit includes 9 cable glands



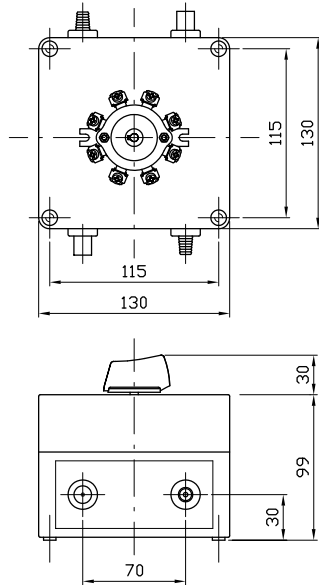
Type: T10022/C

Standard switch identical to type T10022/B but with two voltage surge relays included.

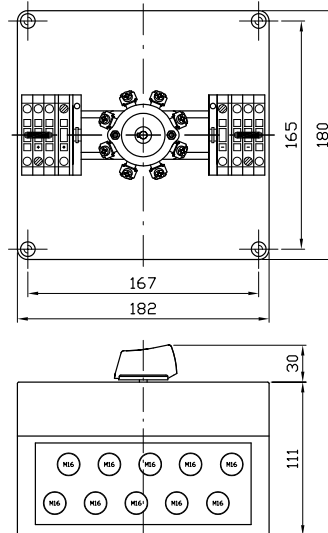




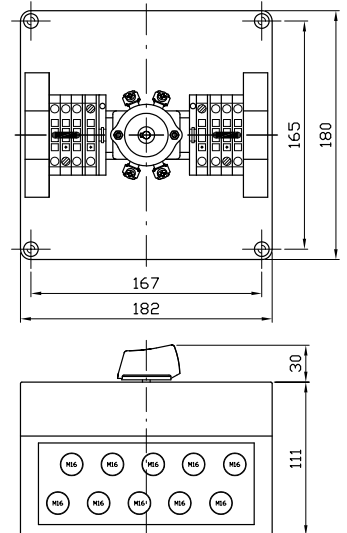
Type: 50A0272-PS13



Type: 50A0264-PS1302



Type: T10022/B



Type: T10022/C

Technical Data

Type	Overtoltage protection	Max. current	Max. Voltage	LxBxH (mm)	Cable connection
T05012/50A0272-PS13	no	16A	500V	130x130x129	directly on the switch
T10022/50A0286-PS13	no	16A	1000V	130x130x129	directly on the switch
T10022/50A0264-PS1302	no	20A	1000V	130x130x129	MC connectors
T10022/B	no	25A	1000V	182x180x143	on terminal blocks
T10022/C	yes	25A	1000V	182x180x143	on terminal blocks



An overview of other Santon Solar switches. Santon has been designing custom-built switches for industrial applications for many years. Switches with up to 200 poles, for up to 1000V AC/DC and up to 1000A. Santon switches can be supplied with many accessories and can be manufactured to customers specific requirements, please contact the sales office for further information.

